

# Spatial and Economic Master Planning

Resilient, healthy and happy places to live,  
work and learn



# Integrated planning expertise

## Economy Driven Design

By 2050, 70% of the world's population will live in cities. This will lead to pressure on resources, transport, water, space, environmental quality and public services. The transformation of these fast-growing urban areas into resilient, healthy and happy places to live, work and learn leads through an integrated and participatory approach in planning. That is our vision, based on the experience in planning all over the world since our foundation in 1881. For this purpose we collaborate with clients, partners and colleagues working in different fields of expertise. Engagement with all relevant stakeholders, cooperation with governmental organisations and enhancement of economic developments are key. In all our projects we are taking into account the social, cultural and natural values and impacts. We combine thorough analysis with creative and innovative solutions. We value the process as a key element of planning and projects.

We notice that our clients value thorough and sound results, innovative solutions and shorter completion times. We couldn't agree more. It is the basis for our working methods, experience, qualifications and the way we build the best team.

# Way of working

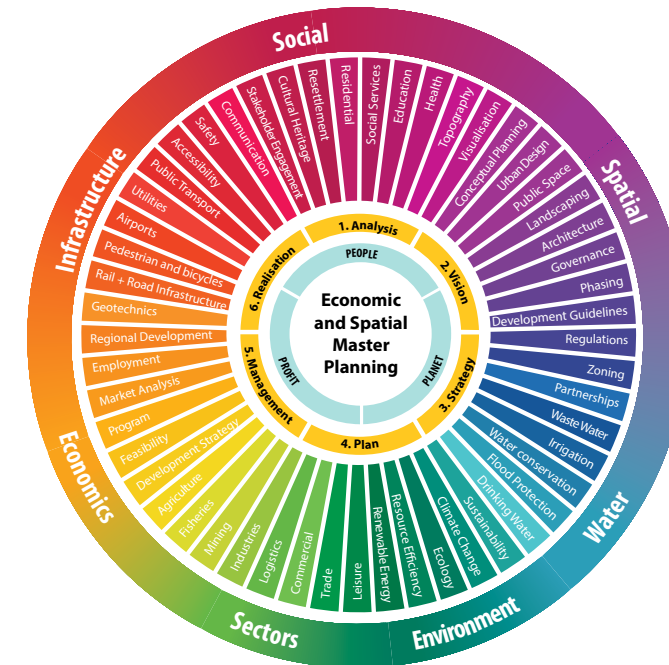


Figure 1: Elements of Economic and Spatial Master Planning

We believe that only a truly comprehensive and integrated approach is the right way to develop successful spatial and economic plans. This requires involving a large number of disciplines we all have at our fingertips within the company (see figure 1: elements of Economic and Spatial Master Planning). We compose tailor made project teams fit to your business needs, consisting of for instance strategy consultants, regional and urban planners and designers, economists and market researchers and engineers in the fields of infrastructure, (public) transport, utilities, ports, aviation, industry, water, energy, environment and finance. Besides an integrated approach sustainable planning requires close cooperation with you as client, and respectfully engaging stakeholders, all well managed by our skilled and certified projectmanagers.

## Expertise

The main topics of our planning projects cover a variety of scales and subjects:

1. New Towns and Urban Renewal
2. Airport Cities / Transit Oriented Development
3. Industrial Zones and Industrial Cities
4. Business Parks / Science Campuses
5. Regional Strategies



# 1 New towns and urban renewal

Cities will have to adapt to new demands from society, new technologies and climate change. If not they will lose the competition with other urban regions. For this reason cities are continuously in a process of change. City governments and developers cooperate in making plans for Urban Renewal and New Towns, implementing the best possible conditions for future life and work. One of the key drivers for these projects is stimulating the economy by improving infrastructure, (public) transport, utilities and social services.

There are many reasons for considering the construction of new towns. There might be a new economic centre, such as a port, industrial park or airport, bringing new jobs, thus creating a market for new housing and related services. Often existing cities don't have the capacity or space to cope with the growing demand for housing and transport. Or, there is urgency to create a new urban area with a dedicated character, for example a University Campus with related housing and services.

We have been involved in the master planning and design of new towns and urban renewal worldwide for decades. We learned from experience that a comprehensive and integrated approach is the only path towards successful plans. We base new towns and urban renewal on a (regional) economic and spatial strategy proving a sound basis for resilient, healthy and happy cities.

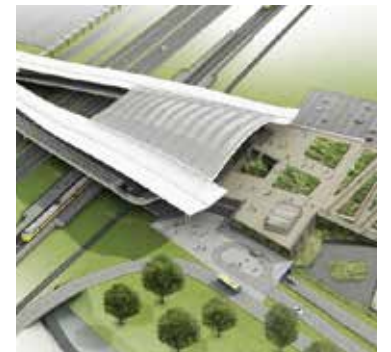




# 2 Airport cities / transit oriented development

Transport has always greatly influenced the design of regions and cities. Transport Oriented Development aims at maximizing the effectiveness of transport systems for the benefits of cities and regions in terms of economy and quality of life, by investing in connections and concentrating activities on the best accessible spots.

An Airport City is a special kind of Transport Oriented Development. Air transport is still growing worldwide and in its slipstream airports are booming business, and also the commercial, logistic, industrial and tourist functions around it. Governments and developers try to capitalise on this trend by planning new infrastructure and business zones. Our company has an extensive portfolio in infrastructure and airport design. We are involved in transport oriented developments and the master planning and design of airport cities worldwide.



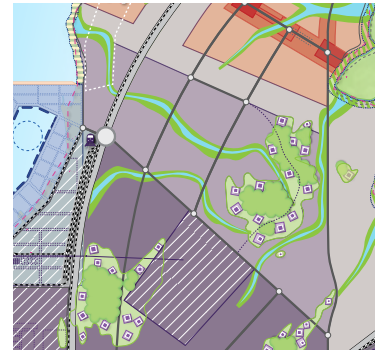


# 3 Industrial zones and industrial cities

Governments, private developers and industrial companies seek solutions to create sustainable and profitable conditions for industrial development. Critical success factors are finding the best location, planning for efficiency and commercial viability, sustainability, avoiding environmental damages and organising resettlements.

We believe in organising industrial settlements in dedicated well-positioned zones, industrial parks or estates, thus limiting impact on nature, environment and residential areas. At the same time, well-designed industrial parks have many advantages for the settling companies such as cost effective shared services and utilities, improved safety and security and professional park management of the site.

We have an extensive track record in designing industrial (port) zones and parks for oil & gas, mining, chemical, pharmaceutical, food & beverage and logistic industries world-wide. We assist leading multinationals in the planning of their facilities from strategic consultancy and master planning up to detailed designs, tender documents, permitting procedures and supervision.





# 4 Business parks/science campuses

Creating sustainable and profitable conditions for business development, that's our mutual objective. Issues to solve are generating market information, finding suitable locations, phasing and financing and finally the marketing in order to entice companies to settle. Well located and designed business parks bring advantages for all stakeholders. They generate thriving companies, new jobs and create spin-off for secondary industries and services.

The development of Business and Science Parks or Campuses requires careful master planning; accessibility should be prime, the working environment should be attractive – the enjoy work principle. Utilities and services have to be top and the quality of the site itself should be high which reflects in well-designed public space, landscaping and architecture. Safety, security and other park management services are important features for the settling companies.

Our ambition is creating feasible projects, profitable for our client, the stakeholders and society. We have an extensive experience with the planning, design and the management of business parks. This experience enables us to assist our clients in creating state of the art business parks, estates and science parks.



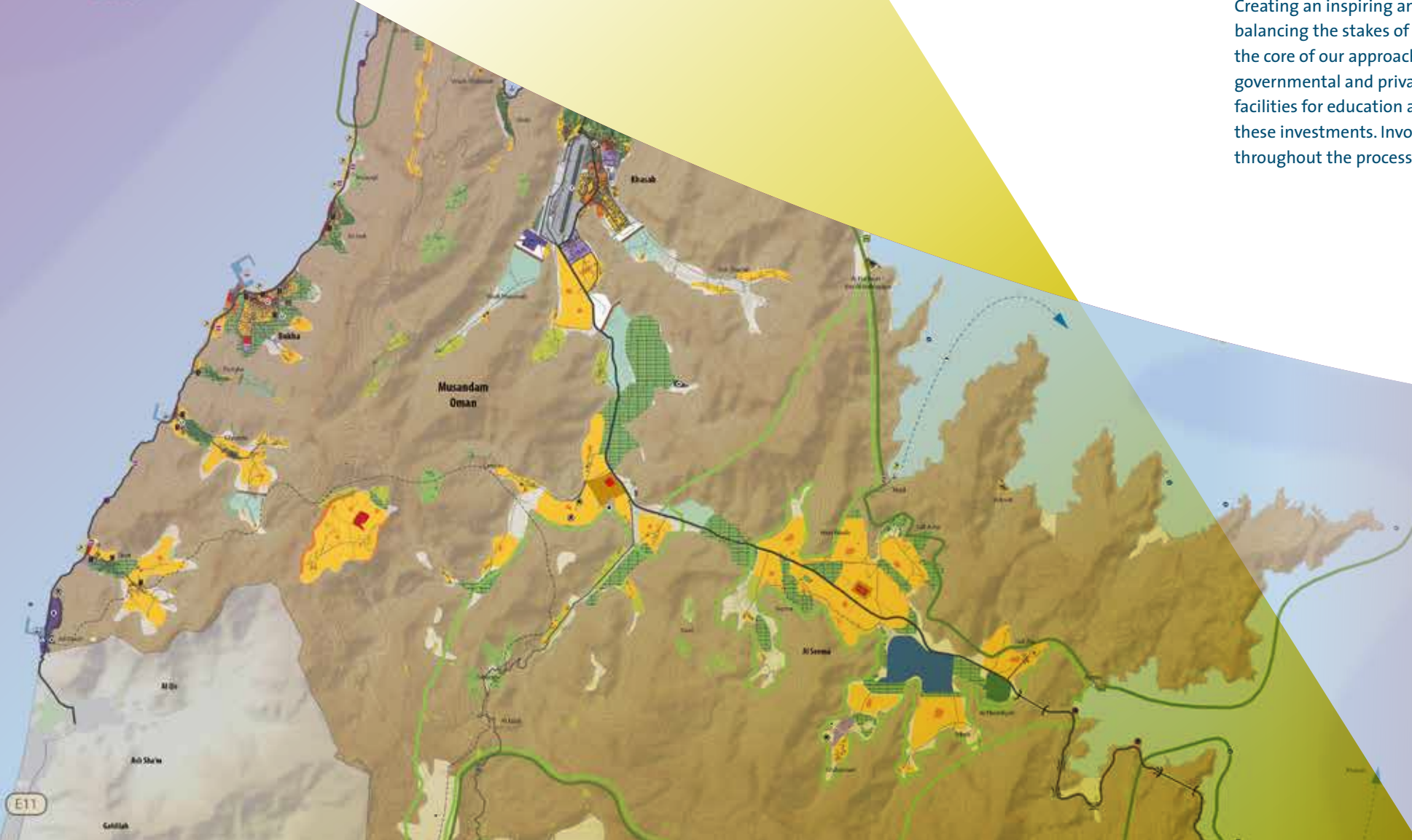


# 5 Regional strategies

Arabian Gulf

In order to boost socio-economic developments of regions in a sustainable and cost effective way, governments increasingly feel the urgency to make plans on a regional or national scale. The challenge is to identify the economic growth-potential and opportunities for renewal, and at the same time improving the social and environmental situation, bringing wealth in a sustainable manner.

Creating an inspiring and shared vision on the sustainable development of a region, balancing the stakes of economic progress and social, natural and cultural values, is the core of our approach. The master plans we create are starting point for large scale governmental and private investments in for example infrastructure and socio-economic facilities for education and health care. Our plans aim to optimize the effectiveness of these investments. Involving professional stakeholders as well as representatives of citizens throughout the process is important for the successful implementation of the plans.



# Spatial and Economic master planning

## Our Services

- Vision and Strategy, Policy and Concept Development
- Master Planning, Land-use planning
- Urban Design
- Landscape Design
- Architecture
- Visualisation and Video
- Transport, Infrastructure and Utilities
- Feasibility Studies
- Market Analysis
- Economic Studies
- Investment Strategy
- Financial feasibility
- Strategic and ESIA
- Stakeholder engagement
- Capacity Building
- Legal Services, Zoning plans
- Park management, governance and management strategies
- Project management (IPMA certified) and Project Office

Royal HaskoningDHV is a leading independent, international engineering consultancy service provider with roots established in the Netherlands, the United Kingdom, the Far East and South Africa. We specialise in Urban Development, Transport, Ports, Airport, Water, Industry, Energy, Mining and Buildings.

A first choice consultancy for major world challenges, our experts provide sustainable and pragmatic solutions for green field developments and the (re-)development of (mega)-cities, transport, food security, energy resources and water management.

Working together we can achieve more. At Royal HaskoningDHV we embrace this philosophy. With an overarching aim to enhance society together, we work closely with clients, stakeholders, industry, and academic leaders, to ensure projects are delivered on time and within budget, while providing a better, brighter, sustainable future.

Royal HaskoningDHV is a member of the Association of Consulting Engineers in The Netherlands (ONRI, now called “NL Ingenieurs”) and the UK Association of Consulting Engineers (ACE), both of which are affiliated to the Fédération Internationale des Ingénieurs-Conseils (FIDIC). It is also a member of NEDECO, Netherlands Engineering Consultants.

The company's QMS complies with the requirements of BS/NEN-EN-ISO 9001:2000 and is certified by Lloyds Register Quality Assurance. The QMS also includes an Environmental Management System (EMS) which complies with the requirements of BS/NEN-EN-ISO 14001:2004.







If you have any questions or require further information, please contact:



**Mariska Ruiter**

E [mariska.ruiter@rhdhv.com](mailto:mariska.ruiter@rhdhv.com)

T +31 6 10 89 50 28



**Rene Zijlstra**

E [rene.zijlstra@rhdhv.com](mailto:rene.zijlstra@rhdhv.com)

+31 6 53 73 87 07

[royalhaskoningdhv.com](http://royalhaskoningdhv.com)