

## A passion for renewables

Royal HaskoningDHV is a world leading renewable energy consultancy. For over 20 years we have provided environmental, ecological, consenting, engineering, risk and project management services to the renewable energy industry.

We are driven by our passion for offshore renewables, our commitment to high quality services and our belief that a diverse and secure energy mix is essential to enhancing society.

Our track record in offshore renewable energy speaks for itself:

- 13 years of offshore wind project experience
- 10 years of wave and tidal project experience
- 12GW of current offshore wind projects
- six major wave and tidal projects; including the first grid connected marine turbine and the first consented tidal array project.

Royal HaskoningDHV provides a comprehensive suite of consultancy services throughout the project cycle from site feasibility, EIA and consenting, specialist and technical services, engineering, procurement, project management as well as transaction and due diligence services.

In addition to our work in offshore renewable energy, Royal HaskoningDHV carries out some 30,000 projects every year in planning and transport, infrastructure, water, maritime, aviation, industry, energy, mining and buildings. In combination with our international office network, Royal HaskoningDHV delivers world-class solutions locally to clients around the globe, for the public and private sector.





### Biomass Power

With an international track record in ship-to-shore, storage and handling and dedicated/mixed fuel biomass power plants, we are actively involved in a number of large, medium and small scale projects throughout the UK.

### Maritime Engineering

As a world leader in the waters edge and maritime/marine sector, we have the capability and experience to meet the development, engineering and consultancy needs through the life cycle of your project.

### Transport & Logistics

Royal HaskoningDHV's transport and logistics experience over 30 years, enables our experts to advise on both onshore and offshore works.

### Offshore Wind

We are currently working on offshore wind projects with a combined generating capacity of over 12GW.

### Port/Load off

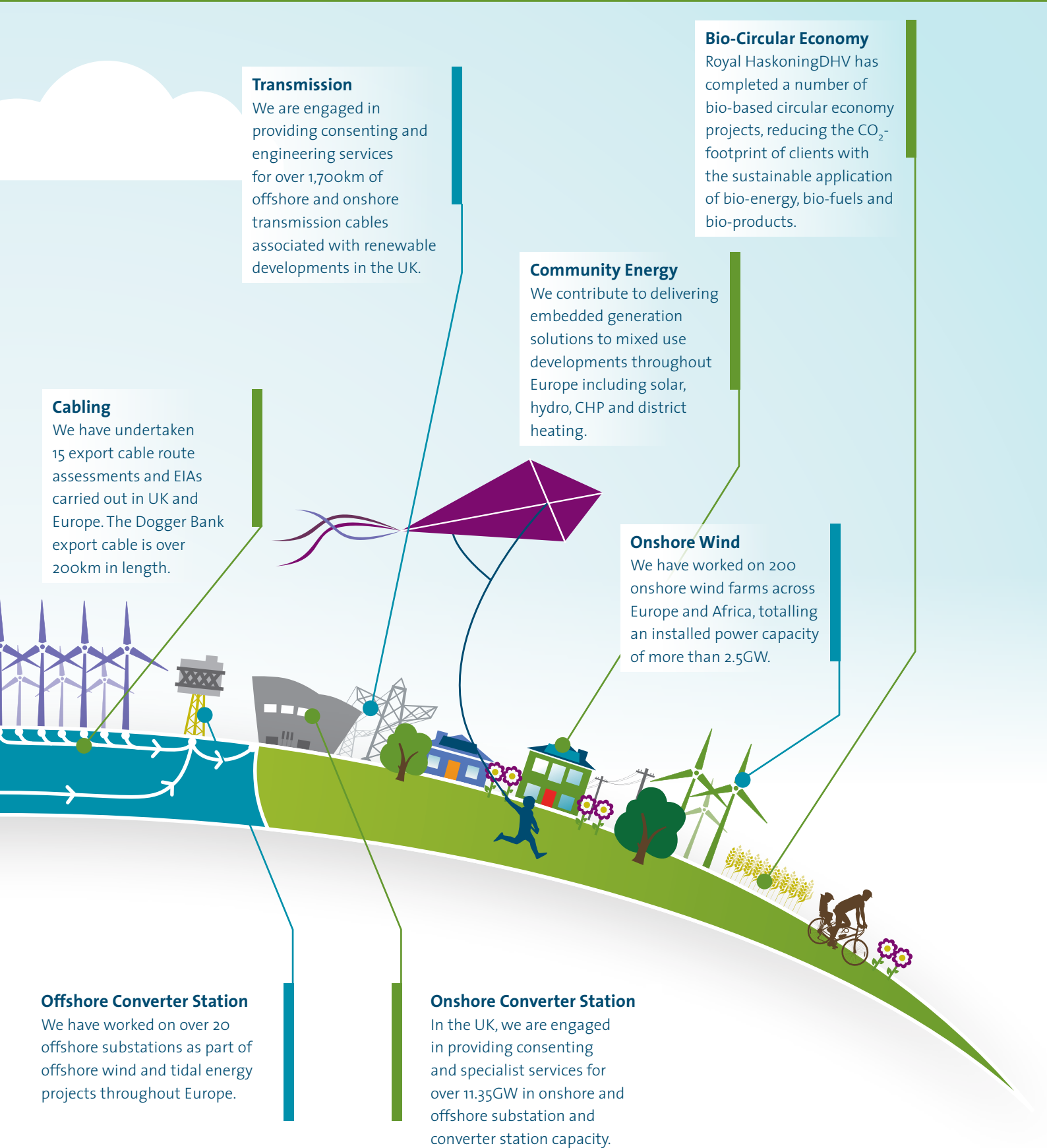
Royal HaskoningDHV has undertaken several port assessment studies to determine potential load out facilities for offshore wind developers.

### Wave & Tidal

We have played a major role in:

- consenting the world's first grid connected tidal turbine
- the world's first tidal array
- six major wave and tidal array projects.

# A passion for renewables



## Transmission

We are engaged in providing consenting and engineering services for over 1,700km of offshore and onshore transmission cables associated with renewable developments in the UK.

## Cabling

We have undertaken 15 export cable route assessments and EIAs carried out in UK and Europe. The Dogger Bank export cable is over 200km in length.

## Bio-Circular Economy

Royal HaskoningDHV has completed a number of bio-based circular economy projects, reducing the CO<sub>2</sub>-footprint of clients with the sustainable application of bio-energy, bio-fuels and bio-products.

## Community Energy

We contribute to delivering embedded generation solutions to mixed use developments throughout Europe including solar, hydro, CHP and district heating.

## Onshore Wind

We have worked on 200 onshore wind farms across Europe and Africa, totalling an installed power capacity of more than 2.5GW.

## Offshore Converter Station

We have worked on over 20 offshore substations as part of offshore wind and tidal energy projects throughout Europe.

## Onshore Converter Station

In the UK, we are engaged in providing consenting and specialist services for over 11.35GW in onshore and offshore substation and converter station capacity.

# A passion for renewables

Our offshore renewables team encompasses a range of skills across our European and international offices. We undertake projects through every stage of the project life cycle, from conception and construction to completion, and from feasibility to financial close. Our in-house specialist services include:

## Project Feasibility & Definition

Constraints analysis, resource assessment, financial modelling, concept design, design envelope project risk assessment, project planning and programme, grid studies, consenting strategy, approach to transmission and cable corridor optioneering.

## Consenting & Permissions

Environmental impact assessment, consent strategy, habitats regulations appraisal, cumulative impact assessment, regulator and stakeholder consultation, comprehensive in house specialist services.

## FEED Design

Project outline design, civil, structural, mechanical and electrical engineering services, value engineering, commercial and business case appraisal.

## Procurement & Financial Close

Supplier appraisal, project management, commercial management and support, procurement, financial due diligence, technical due diligence, seller/purchase due diligence.

## Owners Representative

Owners Engineer, stakeholder communications, regulatory compliance, grid liaison.

## Owners Environmental Representative

Environmental liaison officer, environmental monitoring, environmental compliance and reporting, stakeholder communications, planning conditions discharge.



## Project Infrastructure

Equipment engineering (wind/wave), equipment selection, civil, structural, mechanical and electrical engineering services, transmission, transport and rail infrastructure.

## Port Infrastructure

Load out port selection, marine engineering, port facilities, port logistics (maritime and shipping), transport and rail infrastructure, port EIA and consenting services.

## Operations & Maintenance

Port selection, design of bespoke O&M facilities, training, construction design management coordinators, health safety and environment, environmental management systems, quality assurance, manuals and procedures, structural inspection services.

---

## For more information please contact:

Environment, Consents & Licensing -  
alistair.davison@rhdhv.com

Project Management, Engineering and Design support -  
andrew.dyne@rhdhv.com

[royalhaskoningdhv.com](http://royalhaskoningdhv.com)