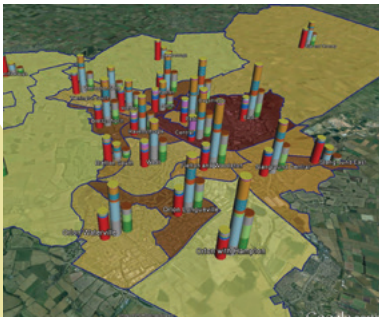


A better, faster approach to identifying health priorities – children’s health JSNA

client | partner Peterborough Health and Wellbeing Board

Our work on the children’s health Joint Strategic Needs Assessments (JSNA) in Peterborough has led to:

- A better understanding of the wider determinants impacting children’s health.
- Increased sharing of health information and better partnership working and governance arrangements.



Visualised data and closer collaborative working can be used to effectively target health resources

- Effective and evidence based decisions that can be shared and justified.
- Better spent, targeted resources.

Understanding the wider determinants

Accelerated Collaboration brought together evidence and expert thinking from health, housing, education and crime to identify the drivers that most impact children’s health. JSNAs are an important tool to research and provide budgets for health priorities. The aim of this project was to create a better, faster way of approaching how Peterborough understands, presents and fixes health priorities through the Strategic Needs Assessment process.

Making interventions work harder

A visual model was created, aligning over 80 different data sets. This visual tool makes it possible to target health interventions much more precisely. The process has resulted in new data governance and sharing arrangements being introduced and led to greater collaboration between the local authority and key partners.

Engaging the public

This new approach to developing a JSNA has also resulted in a suite of accessible materials, available through a dedicated online platform, which wider stakeholders, councillors, and local people can access and understand.

“This innovative approach enables us to bring together and illustrate data in different ways to stimulate debate and forge deeper understanding so we can become more effective decision makers.”

Sue Mitchell, Acting Director of Public Health, Peterborough

