



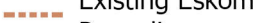







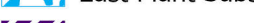
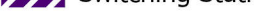
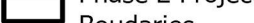



Locality Map

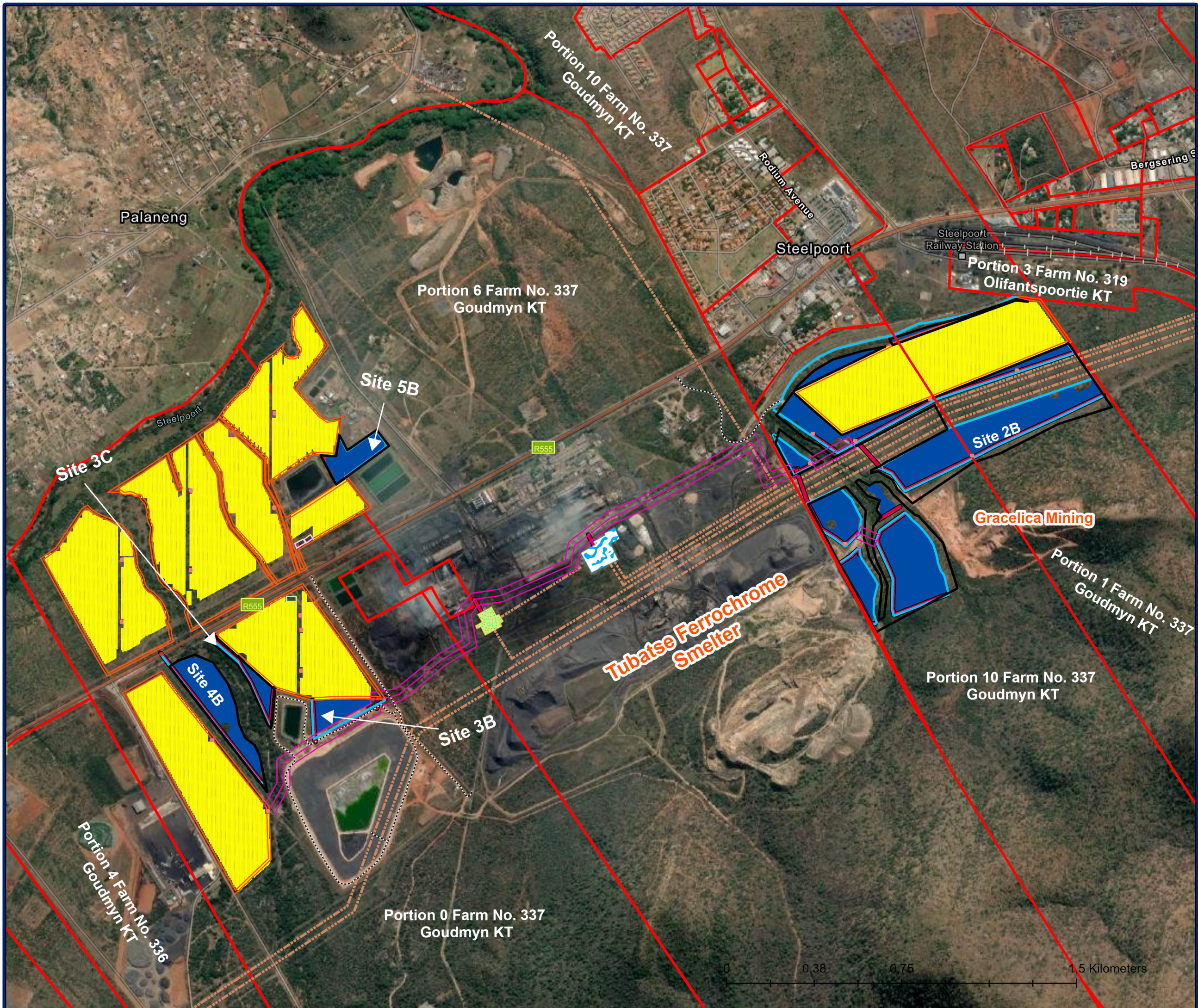
Legend

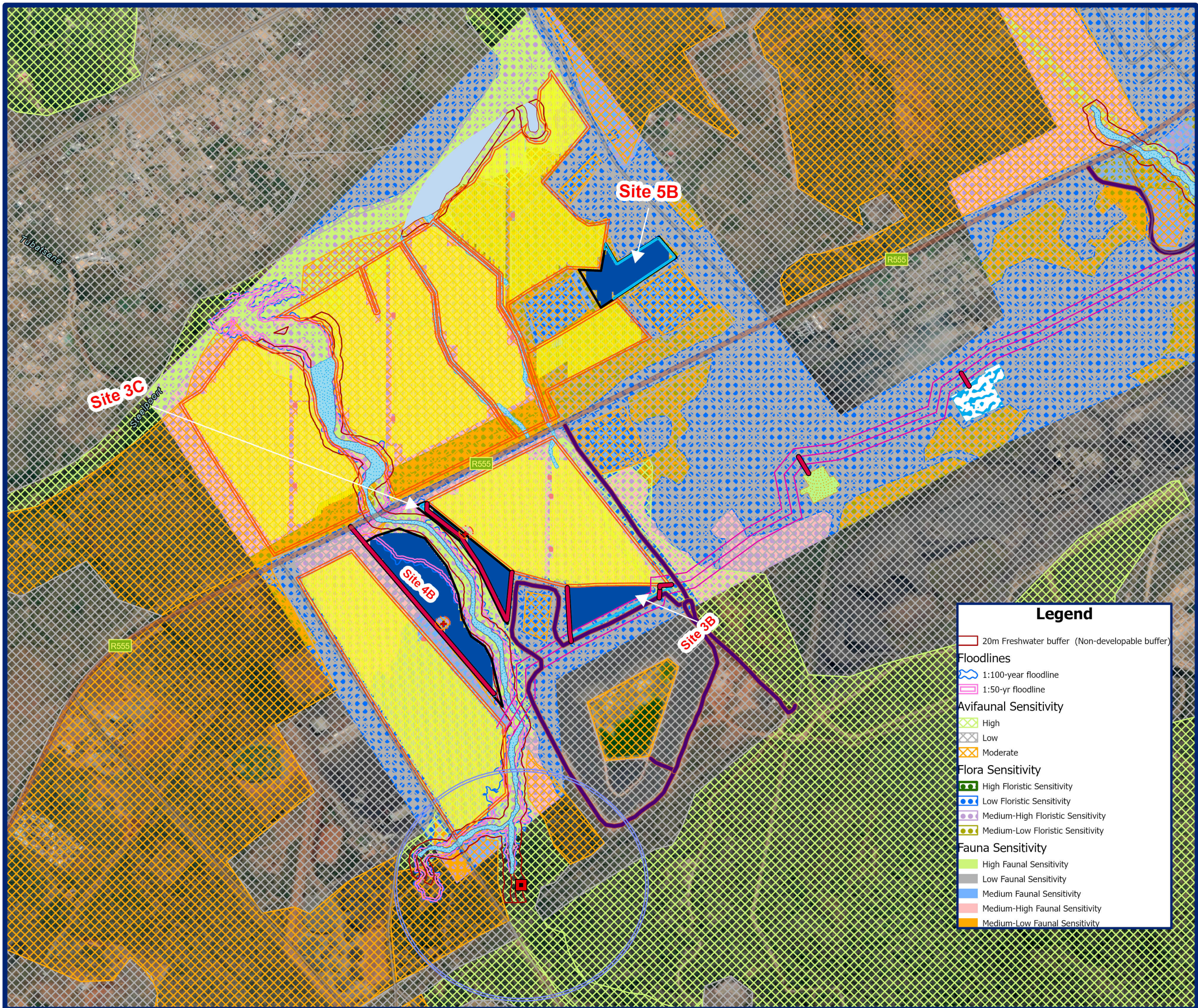
-  Phase 1 Arrays
-  Phase 2 Arrays
-  Proposed Phase 2 Powerlines
-  Existing Eskom Powerlines
-  Storage Yard
-  Warehouse
-  Underground Cables
-  Existing Access Road
-  Cadastral Boundary
-  West Plant Substation
-  East Plant Substation
-  Switching Stations
-  Phase 2 Project Boundaries
-  Phase 1 Project Boundaries
-  Internal Access Road
-  Box transformers

Source:
ESRI
Samancor Chrome
SIGMA



Scale: 1:15 000





Legend

- Wahlbergs Eagle nest
 - Wahlbergs Eagle Nest - 350m buffer
 - + Heritage Features
 - Heritage Buffer
 - Underground Cables
 - Phase 2 Arrays
 - Phase 1 Arrays
 - Existing Access Road
 - Internal Access Road
 - Proposed Phase 2 Powerlines
 - Phase 2 Project Boundaries
 - Phase 1 Project Boundaries
 - East Plant Substation
 - West Plant Substation
 - Box transformers
- Delineation Watercourses**
- Episodic Drainage Line
 - River

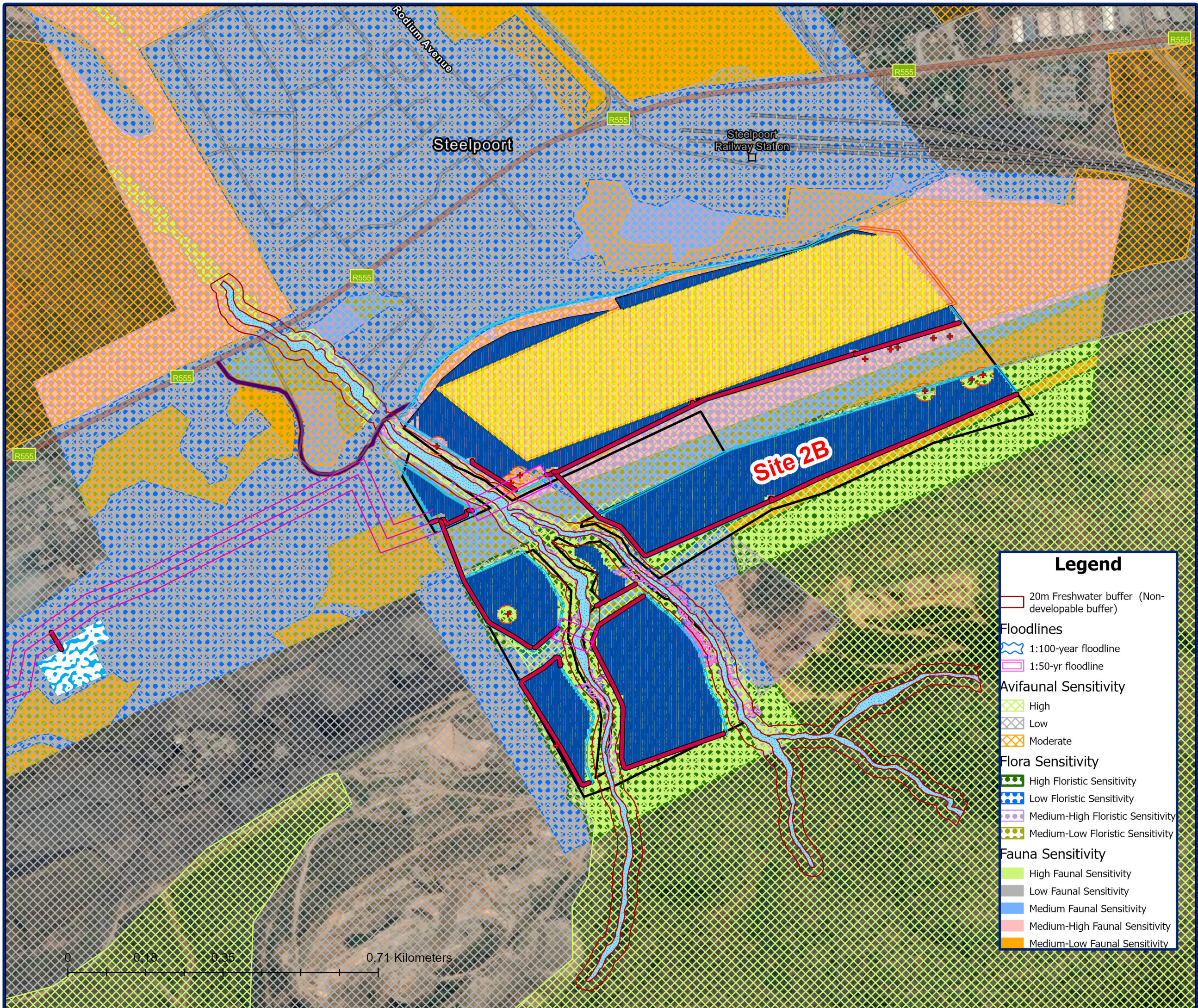
Legend

- 20m Freshwater buffer (Non-developable buffer)
- Floodlines**
- 1:100-year floodline
 - 1:50-yr floodline
- Avifaunal Sensitivity**
- High
 - Low
 - Moderate
- Flora Sensitivity**
- High Floristic Sensitivity
 - Low Floristic Sensitivity
 - Medium-High Floristic Sensitivity
 - Medium-Low Floristic Sensitivity
- Fauna Sensitivity**
- High Faunal Sensitivity
 - Low Faunal Sensitivity
 - Medium Faunal Sensitivity
 - Medium-High Faunal Sensitivity
 - Medium-Low Faunal Sensitivity

Source:
ESRI
Samancor Chrome
SAS
BEC
GCS
PGS



Scale: 1:10 500



Legend

- + Heritage Features
- - - Heritage Buffer
- Proposed Phase 2 Powerlines
- Phase 2 Arrays
- Phase 1 Arrays
- Existing Access Road
- Underground Cables
- Phase 2 Project Boundaries
- Phase 1 Project Boundaries
- Internal Access Road
- Storage Yard
- Warehouse
- East Plant Substation
- West Plant Substation
- Switching Stations
- Box transformers

- #### Delineation Watercourses
- Episodic Drainage Line
 - River

- ### Legend
- 20m Freshwater buffer (Non-developable buffer)
 - Floodlines**
 - 1:100-year floodline
 - 1:50-yr floodline
 - Avifaunal Sensitivity**
 - High
 - Low
 - Moderate
 - Flora Sensitivity**
 - High Floristic Sensitivity
 - Low Floristic Sensitivity
 - Medium-High Floristic Sensitivity
 - Medium-Low Floristic Sensitivity
 - Fauna Sensitivity**
 - High Faunal Sensitivity
 - Low Faunal Sensitivity
 - Medium Faunal Sensitivity
 - Medium-High Faunal Sensitivity
 - Medium-Low Faunal Sensitivity



Source:
ESRI
Samancor Chrome
SAS
BEC
GCS
PGS

Scale: 1:8 000

Project Co-ordinates

Table 1: Site co-ordinates

Site Corner points	Latitude (S)			Longitude (E)		
Site 2B						
1	24°	44'	4.66"	30°	12'	34.26"
2	24°	43'	59.68"	30°	12'	51.72"
3	24°	43'	59.97"	30°	12'	53.39"
4	24°	43'	59.80"	30°	12'	51.74"
5	24°	44'	5.44"	30°	12'	34.65"
6	24°	44'	6.14"	30°	12'	32.90"
7	24°	44'	7.74"	30°	12'	25.72"
8	24°	44'	9.17"	30°	12'	23.05"
9	24°	44'	11.16"	30°	12'	20.70"
10	24°	44'	11.70"	30°	12'	20.29"
11	24°	44'	11.91"	30°	12'	20.21"
12	24°	44'	11.91"	30°	12'	20.18"
13	24°	44'	14.73"	30°	12'	17.86"
14	24°	44'	17.53"	30°	12'	21.60"
15	24°	44'	17.94"	30°	12'	22.54"
16	24°	44'	18.54"	30°	12'	23.76"
17	24°	44'	19.29"	30°	12'	24.74"
18	24°	44'	20.10"	30°	12'	25.87"
19	24°	44'	13.56"	30°	12'	39.79"
20	24°	44'	16.57"	30°	12'	41.55"
21	24°	44'	21.77"	30°	12'	31.00"
22	24°	44'	22.07"	30°	12'	30.99"
23	24°	44'	21.91"	30°	12'	31.50"
24	24°	44'	21.82"	30°	12'	31.96"
25	24°	44'	22.47"	30°	12'	33.15"
26	24°	44'	22.93"	30°	12'	33.97"
27	24°	44'	23.25"	30°	12'	34.13"
28	24°	44'	23.98"	30°	12'	34.56"
29	24°	44'	25.87"	30°	12'	36.71"
30	24°	44'	20.82"	30°	12'	45.22"
31	24°	44'	15.84"	30°	12'	56.89"
32	24°	44'	13.78"	30°	13'	4.32"
33	24°	44'	5.78"	30°	12'	58.30"
34	24°	44'	17.34"	30°	12'	26.98"
35	24°	44'	27.42"	30°	12'	37.51"
36	24°	44'	27.35"	30°	12'	37.17"

Site Corner points	Latitude (S)			Longitude (E)		
37	24°	44'	24.79"	30°	12'	34.08"
38	24°	44'	24.00"	30°	12'	33.45"
39	24°	44'	23.13"	30°	12'	32.39"
40	24°	44'	23.21"	30°	12'	31.53"
41	24°	44'	23.62"	30°	12'	30.73"
42	24°	44'	22.86"	30°	12'	29.27"
43	24°	44'	23.19"	30°	12'	28.83"
44	24°	44'	24.91"	30°	12'	30.45"
45	24°	44'	25.48"	30°	12'	32.23"
46	24°	44'	26.75"	30°	12'	31.68"
47	24°	44'	27.50"	30°	12'	32.42"
48	24°	44'	28.77"	30°	12'	31.34"
49	24°	44'	31.79"	30°	12'	31.30"
50	24°	44'	33.65"	30°	12'	32.01"
51	24°	44'	36.17"	30°	12'	33.29"
52	24°	44'	40.19"	30°	12'	32.81"
53	24°	44'	40.60"	30°	12'	32.04"
54	24°	44'	36.27"	30°	12'	32.51"
55	24°	44'	34.99"	30°	12'	32.26"
56	24°	44'	33.36"	30°	12'	31.12"
57	24°	44'	32.65"	30°	12'	30.77"
58	24°	44'	31.14"	30°	12'	30.33"
59	24°	44'	30.42"	30°	12'	30.03"
60	24°	44'	26.86"	30°	12'	30.27"
61	24°	44'	23.75"	30°	12'	27.43"
62	24°	44'	26.04"	30°	12'	22.32"
63	24°	44'	42.06"	30°	12'	31.68"
64	24°	44'	39.06"	30°	12'	37.75"
65	24°	44'	36.52"	30°	12'	42.94"
66	24°	44'	30.81"	30°	12'	40.97"
67	24°	44'	20.65"	30°	12'	24.25"
68	24°	44'	16.57"	30°	12'	18.29"
69	24°	44'	18.38"	30°	12'	17.78"
70	24°	44'	22.44"	30°	12'	20.19"
Site 3B						
71	24°	44'	50,65"S	30°	11'	13,24"
72	24°	44'	50,72"	30°	11'	23,61"
73	24°	44'	55,66"	30°	11'	13,5"
Site 3C						
74	24°	44'	42,3"S	30°	10'	59,68"

Site Corner points	Latitude (S)			Longitude (E)		
75	24°	44'	49,27"	30°	11'	8,34"
76	24°	44'	54,17"	30°	11'	7,75"
77	24°	44'	42,72"	30°	10'	58,77"
Site 4B						
78	24°	44'	46,32"	30°	10'	53,63"
79	24°	44'	44,86"	30°	10'	57,16"
80	24°	44'	57,56"	30°	11'	6,08"
81	24°	45'	2,19"	30°	11'	7,14"
Site 5B						
82	24°	44'	19,9"	30°	11'	14,82"
83	24°	44'	16,6"	30°	11'	22,44"
84	24°	44'	18,61"	30°	11'	24,14"
85	24°	44'	23,39"	30°	11'	17,0"

Table 2: Overhead powerline co-ordinates

Route	Latitude (S)			Longitude (E)		
Powerline 50m Assessment Corridor – Main						
Start point of the activity	24°	45'	5"	30°	11'	8"
Point 1 (Bend Point)	24°	45'	1"	30°	11'	10"
Point 2 (Bend Point)	24°	44'	59"	30°	11'	10"
Point 3	24°	44'	55"	30°	11'	17"
Point 4 (Bend Point)	24°	44'	52"	30°	11'	23"
Point 5 (Bend Point)	24°	44'	51"	30°	11'	23"
Point 6 (Bend Point)	24°	44'	51"	30°	11'	23"
Point 7	24°	44'	51"	30°	11'	25"
Point 8 (Bend Point)	24°	44'	51"	30°	11'	26"
Point 9 (Bend Point)	24°	44'	46"	30°	11'	32"
Point 10 (Bend Point)	24°	44'	44"	30°	11'	36"
Point 11 (Bend Point)	24°	44'	40"	30°	11'	36"
Point 12 (Bend Point)	24°	44'	39"	30°	11'	36"
Point 13 (Bend Point)	24°	44'	38"	30°	11'	40"
Point 14	24°	44'	36"	30°	11'	46"
Point 15 (Bend Point)	24°	44'	34"	30°	11'	50"
Point 16 (Bend Point)	24°	44'	32"	30°	11'	51"
Point 17 (Bend Point)	24°	44'	28"	30°	11'	55"

Route	Latitude (S)			Longitude (E)		
Point 18	24°	44'	25"	30°	12'	3"
Point 19	24°	44'	22"	30°	12'	9"
Point 20 (Bend Point)	24°	44'	19"	30°	12'	14"
Point 21 (Bend Point)	24°	44'	24"	30°	12'	16"
Point 22	24°	44'	22"	30°	12'	21"
Point 23	24°	44'	21"	30°	12'	20"
Point 24 (Bend Point)	24°	44'	22"	30°	12'	17"
Point 25 (Bend Point)	24°	44'	17"	30°	12'	15"
Point 26	24°	44'	21"	30°	12'	8"
Point 27	24°	44'	24"	30°	12'	1"
Point 28 (Bend Point)	24°	44'	27"	30°	11'	54"
Point 29 (Bend Point)	24°	44'	31"	30°	11'	49"
Point 30 (Bend Point)	24°	44'	33"	30°	11'	49"
Point 31	24°	44'	35"	30°	11'	45"
Point 32 (Bend Point)	24°	44'	37"	30°	11'	39"
Point 33 (Bend Point)	24°	44'	37"	30°	11'	35"
Point 34 (Bend Point)	24°	44'	39"	30°	11'	34"
Point 35 (Bend Point)	24°	44'	43"	30°	11'	34"
Point 36 (Bend Point)	24°	44'	45"	30°	11'	31"
Point 37 (Bend Point)	24°	44'	49"	30°	11'	25"
Point 38 (Bend Point)	24°	44'	49"	30°	11'	24"
Point 39 (Bend Point)	24°	44'	50"	30°	11'	22"
Point 40 (Bend Point)	24°	44'	51"	30°	11'	22"
Point 41	24°	44'	55"	30°	11'	14"
Point 42 (Bend Point)	24°	44'	58"	30°	11'	9"
Point 43 (Bend Point)	24°	45'	1"	30°	11'	9"
End point of the activity	24°	45'	4"	30°	11'	7"
Powerline 50m Assessment Corridor - Section A within Site 2B						
Start point of the activity	24°	44'	20"	30°	12'	22"
Point 1 (Bend Point)	24°	44'	17"	30°	12'	28"
Point 2 (Bend Point)	24°	44'	19"	30°	12'	29"
End point of the activity	24°	44'	22"	30°	12'	23"

Route	Latitude (S)			Longitude (E)		
Powerline 50m Assessment Corridor - Section B within Site 2B						
Start point of the activity	24°	44'	29"	30°	12'	30"
Point 1 (Bend Point)	24°	44'	30"	30°	12'	32"
Point 2 (Bend Point)	24°	44'	31"	30°	12'	31"
End point of the activity	24°	44'	30"	30°	12'	29"

Table 3: Internal access roads co-ordinates

Route	Latitude (S)			Longitude (E)		
Internal Access Road 1-Site 2B						
Start point of the activity	24°	44'	0"	30°	12'	51"
Point 1 (Bend Point)	24°	44'	1"	30°	12'	47"
Point 2	24°	44'	2"	30°	12'	43"
Point 3 (Bend Point)	24°	44'	2"	30°	12'	38"
Point 4 (Bend Point)	24°	44'	3"	30°	12'	38"
Point 5 (Bend Point)	24°	44'	5"	30°	12'	34"
Point 6	24°	44'	5"	30°	12'	30"
Point 7 (Bend Point)	24°	44'	6"	30°	12'	26"
Point 8 (Bend Point)	24°	44'	7"	30°	12'	24"
Point 9 (Bend Point)	24°	44'	10"	30°	12'	21"
Point 10 (Bend Point)	24°	44'	11"	30°	12'	19"
Point 11 (Bend Point)	24°	44'	13"	30°	12'	18"
Point 12 (Bend Point)	24°	44'	14"	30°	12'	17"
Point 13	24°	44'	16"	30°	12'	21"
Point 14	24°	44'	18"	30°	12'	24"
Point 15 (Bend Point)	24°	44'	20"	30°	12'	26"
Point 16	24°	44'	16"	30°	12'	33"
Point 17 (Bend Point)	24°	44'	13"	30°	12'	40"
Point 18	24°	44'	10"	30°	12'	50"
End point of the activity	24°	44'	6"	30°	12'	58"
Internal Access Road 2-Site 2B						
Start point of the activity	24°	44'	21"	30°	12'	32"
Point 1	24°	44'	19"	30°	12'	38"

Route	Latitude (S)			Longitude (E)		
Point 2 (Bend Point)	24°	44'	16"	30°	12'	42"
Point 3	24°	44'	13"	30°	12'	52"
Point 4 (Bend Point)	24°	44'	10"	30°	13'	2"
Point 5 (Bend Point)	24°	44'	12"	30°	13'	3"
Point 6	24°	44'	16"	30°	12'	54"
Point 7	24°	44'	19"	30°	12'	48"
Point 8	24°	44'	22"	30°	12'	40"
Point 9 (Bend Point)	24°	44'	24"	30°	12'	36"
Point 10 (Bend Point)	24°	44'	22"	30°	12'	34"
End point of the activity	24°	44'	22"	30°	12'	33"
Internal Access Road 3-Site 2B						
Start point of the activity	24°	44'	29"	30°	12'	32"
Point 1 (Bend Point)	24°	44'	27"	30°	12'	36"
Point 2 (Bend Point)	24°	44'	28"	30°	12'	37"
Point 3 (Bend Point)	24°	44'	29"	30°	12'	38"
Point 4 (Bend Point)	24°	44'	31"	30°	12'	40"
Point 5	24°	44'	33"	30°	12'	40"
Point 6 (Bend Point)	24°	44'	35"	30°	12'	41"
Point 7 (Bend Point)	24°	44'	37"	30°	12'	42"
Point 8	24°	44'	39"	30°	12'	38"
Point 9 (Bend Point)	24°	44'	40"	30°	12'	34"
Point 10 (Bend Point)	24°	44'	39"	30°	12'	39"
Point 11 (Bend Point)	24°	44'	35"	30°	12'	34"
Point 12	24°	44'	33"	30°	12'	33"
Point 13 (Bend Point)	24°	44'	31"	30°	12'	32"
End point of the activity	24°	44'	29"	30°	12'	32"
Internal Access Road 4-Site 2B						
Start point of the activity	24°	44'	34"	30°	12'	26"
Point 1 (Bend Point)	24°	44'	32"	30°	12'	28"
Point 2 (Bend Point)	24°	44'	32"	30°	12'	29"
Point 3 (Bend Point)	24°	44'	33"	30°	12'	30"
Point 4	24°	44'	34"	30°	12'	31"

Route	Latitude (S)			Longitude (E)		
Point 5 (Bend Point)	24°	44'	36"	30°	12'	32"
Point 6 (Bend Point)	24°	44'	38"	30°	12'	31"
Point 7 (Bend Point)	24°	44'	31"	30°	12'	31"
Point 8 (Bend Point)	24°	44'	41"	30°	12'	32"
Point 9 (Bend Point)	24°	44'	41"	30°	12'	31"
Point 10	24°	44'	39"	30°	12'	30"
Point 11	24°	44'	36"	30°	12'	28"
End point of the activity	24°	44'	34"	30°	12'	27"
Internal Access Road 5-Site 2B						
Start point of the activity	24°	44'	26"	30°	12'	22"
Point 1 (Bend Point)	24°	44'	24"	30°	12'	27"
Point 2 (Bend Point)	24°	44'	25"	30°	12'	28"
Point 3 (Bend Point)	24°	44'	28"	30°	12'	20"
Point 4 (Bend Point)	24°	44'	30"	30°	12'	29"
Point 5 (Bend Point)	24°	44'	31"	30°	12'	27"
Point 6 (Bend Point)	24°	44'	29"	30°	12'	24"
End point of the activity	24°	44'	26"	30°	12'	22"
Internal Access Road 6-Site 2B						
Start point of the activity	24°	44'	17"	30°	12'	18"
Point 1 (Bend Point)	24°	44'	19"	30°	12'	20"
Point 2 (Bend Point)	24°	44'	20"	30°	12'	21"
Point 3 (Bend Point)	24°	44'	21"	30°	12'	23"
Point 4 (Bend Point)	24°	44'	22"	30°	12'	20"
Point 5	24°	44'	20"	30°	12'	19"
End point of the activity	24°	44'	17"	30°	12'	18"
Internal Access Road-Site 3B						
Start point of the activity	24°	44'	51"	30°	11'	13"
Point 1	24°	44'	53"	30°	11'	14"
Point 2 (Bend Point)	24°	44'	55"	30°	11'	14"
Point 3	24°	44'	53"	30°	11'	19"
Point 4 (Bend Point)	24°	44'	51"	30°	11'	24"
End point of the activity	24°	44'	50"	30°	11'	24"

Route	Latitude (S)			Longitude (E)		
Internal Access Road-Site 3C						
Start point of the activity	24°	44'	43"	30°	11'	24"
Point 1 (Bend Point)	24°	44'	43"	30°	10'	59"
Point 2 (Bend Point)	24°	44'	46"	30°	11'	3"
Point 3 (Bend Point)	24°	44'	48"	30°	11'	5"
Point 4	24°	44'	51"	30°	11'	6"
Point 5 (Bend Point)	24°	44'	54"	30°	11'	8"
Point 6	24°	44'	51"	30°	11'	8"
End point of the activity	24°	44'	49"	30°	11'	8"
Internal Access Road-Site 4B						
Start point of the activity	24°	44'	45"	30°	11'	53"
Point 1	24°	44'	51"	30°	10'	58"
Point 2	24°	44'	55"	30°	11'	2"
Point 3 (Bend Point)	24°	45'	1"	30°	11'	6"
End point of the activity	24°	45'	1"	30°	11'	7"
Internal Access Road-Site 5B						
Start point of the activity	24°	44'	18"	30°	11'	7"
Point 1 (Bend Point)	24°	44'	19"	30°	11'	18"
Point 2	24°	44'	18"	30°	11'	20"
Point 3 (Bend Point)	24°	44'	17"	30°	11'	22"
Point 4 (Bend Point)	24°	44'	19"	30°	11'	24"
Point 5	24°	44'	21"	30°	11'	21"
End point of the activity	24°	44'	23"	30°	11'	18"